

Importing Application and/or Setting before application starts.

- Copy the relevant folders to the root of an empty USB Memory card. For the settings import you will need the two 2 settings directories, both the 'Current' and 'FactoryDefault'. For the Application update you will need the Application Folder. Both can be done at once or on their own.

Normally we would send you the files in a zipped format, so you will need to unzip the relevant file to get the correct folders

- Turn the machine off
- Insert the USB into the autoclave
- Start the machine

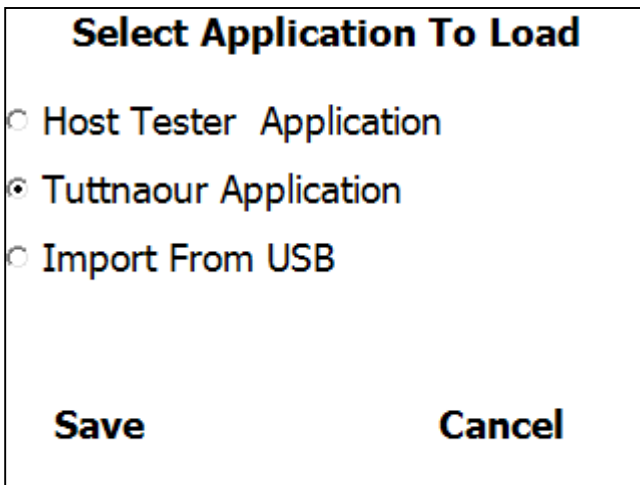
The following screen will be displayed:



After about 30 seconds the Tuttnauer logo will move up and this screen will be displayed:



There is a time window of 3 seconds in which you can press the Start/Stop button in order to get the following screen:



- Using the Up/Down keys please select the 'Import from USB' option.
- Verify that the USB memory device is plugged in.
- Select 'Save' and press Start/Stop key.

The new Application and/or settings will be imported from the USB device and the application will auto start.